



WHISTLERGRILLS



WHISTLERGRILLS

Contents

- About Whistler Grills
- Modular Kitchens
- Built-in Kitchens
- Freestanding BBQ's
- Accessories
- Warranty & Support
- Contact Information





About Whistler Grills

At Whistler Grills, we offer an exceptional range of premium outdoor cooking solutions, designed to elevate every outdoor space with style, durability, functionality and top-class performance.

Our extensive collection includes modular outdoor kitchens, built-in kitchen products, freestanding gas barbecues, and a wide variety of high-quality accessories.

Each product is crafted with precision using premium materials such as 304 stainless steel, ensuring long-lasting reliability and exceptional performance, regardless of the elements. With a focus on both functionality and sleek design, our products cater to the needs of the modern outdoor chef, promising a long-lasting investment and memorable outdoor dining experiences for years to come.

Designed to impress, built to last!





Fairford Modular Kitchen Range

Create The Perfect Outdoor Kitchen with Style, Flexibility, and Unmatched Functionality

The Fairford Range is the pinnacle of luxury, offering you the ultimate outdoor solution, whether you're an avid griller or love to entertain outside! Each module is designed to seamlessly integrate into your outdoor kitchen layout, allowing for complete customisation and flexibility to suit your lifestyle.

Whether you're cooking for a few or hosting a large gathering, the Fairford Range adapts to your needs.

With its clean lines, sleek stainless steel surfaces, and minimalist design, the Fairford Range brings modern sophistication.

Pick one of our pre-designed Fairford Kitchen layouts

Additional extras:

Side Burner, Ceramic Briquettes and Griddle Plates



Ready built

Side burner for additional cooking

304 stainless steel throughout

Gas BBQ

Soft closing drawers & doors

Skirting system to hide wheels and levellers

Kamado Joe / Big Green Egg Housing Unit

Levelling castors



Charcoal Lover? We've got you covered!

This versatile modular range is not limited to gas BBQs – it's perfect for charcoal BBQ lovers too! We have specially crafted a unit designed to house ceramic egg BBQ's (Kamado Joe and Big Green Egg), allowing you to build a complete kitchen around your charcoal BBQ with Whistler units.

“If you're in the market for a kitchen that can house a charcoal BBQ, the Fairford is perfect for smaller spaces, offering full kitchen functionality without the bulk!”



Or mix and match a variety of units to suit your desired layout!

The Fairford Outdoor Modular Kitchen comprises of stylish yet practical units that make up the ultimate al-fresco centrepiece for all outdoor spaces.

Create a bespoke kitchen that suits your space and budget, by choosing from a range of functional units, or pick one of our pre-designed layouts!

“

My Fairford kitchen is exactly what I needed for the garden. I love how I could customise the units to fit into the space I had and still have everything I need. It's a game-changer for outdoor cooking.

The modular design makes it easy to change up the layout as I'm one for constantly changing my mind!

”



The Centrepiece: The Burford 5 Built-in Gas BBQ

This high-quality BBQ is a powerhouse designed to impress! With a huge five burners, it effortlessly handles large gatherings whilst delivering exceptional performance.

Key features:

- High quality stainless steel throughout (304)
- Control panel and cooking surface lights
- 5 powerful burners and ample cooking space
- Smoker Box, Rotisserie and cover included
- Gas hose comes out on the rear right-hand side, and electrics on the rear left.
- LPG models available
- Heat dividers included
- Limited Lifetime Warranty
- Available in silver stainless steel or black!
- Two end finishing panels included



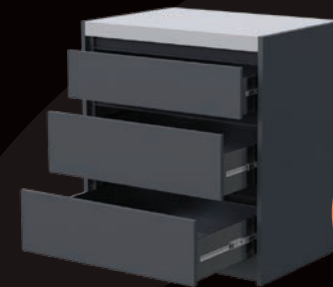
1

Height: 900mm Depth: 564mm Width: 1104mm



2

Height: 900mm Depth: 791mm Width: 800mm



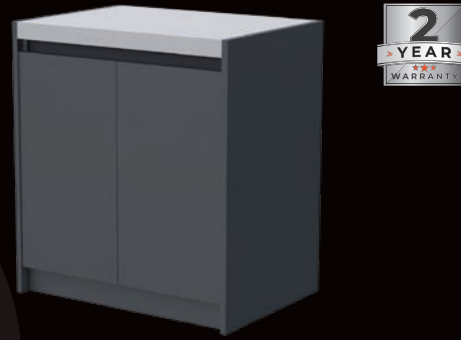
3

Height: 900mm Depth: 581mm Width: 800mm





4 Height: 900mm Depth: 581mm Width: 800mm



7 Height: 900mm Depth: 581mm Width: 800mm



5 Height: 900mm Depth: 582mm Width: 940mm



8 Height: 900mm Depth: 582mm Width: 632mm



6 Height: 900mm Depth: 581mm Width: 800mm



9 Height: 900mm Depth: 581mm Width: 800mm



1. Fairford BBQ housing unit

This unit houses the Burford 5 gas BBQ in stainless steel or black, with double door storage beneath!

2. Ceramic egg unit

Allowing you to introduce the most popular ceramic eggs into a Whistler kitchen, this unit gives customers the opportunity to build a Whistler kitchen around a charcoal BBQ.

3. Triple drawer unit

These durable, soft closing drawers provide ample storage space for those looking to keep cooking and entertainment equipment outside.

4. Double door unit

This heavy duty double door unit allows you to store and hide outdoor equipment within.

5. Fridge

Keep the entertainment flowing with cold drinks at hand in the double Fairford Fridge.

6. Sink

A large stylish sink unit with ample storage beneath, plastic bin included within.

7. Gas bottle unit

Offering a double door gas bottle cabinet, designed to store and hide up to a 13kg gas bottle with a supporting slide-in shelf within.

8. 90 degree corner units

The 90 degree corner units offer ultimate versatility by allowing you to create an L or C shaped kitchen to suit your outdoor space.

9. Side burner

The side burner provides you with a secondary heating source and searing tool, to use in line with the main BBQ burners.



Cirencester Range within the Outdoor Modular Kitchen

Elevate your outdoor living experience with the Cirencester Outdoor Modular Kitchen, where bespoke design meets exceptional quality.

Offering a wide range of premium units, from BBQs and sinks to fridges and storage, this modular range allows you to craft a personalised space that reflects your unique style and caters to your specific needs. Tailored to fit your home and budget, the Cirencester range will transform your outdoor space into a luxurious culinary oasis, combining the freedom of custom design with the durability of high-end materials for an unmatched outdoor cooking experience, all at an affordable price!

Create a premium custom kitchen to fit your space and budget by mixing and matching our units.

Key features:

- Adjustable levelling castors enabling you to alter the height of each unit according to your flooring, providing a professional level finish
- Soft closing doors and drawers
- High-quality, heat, chemical and wear resistant, easy to clean laminam work surfaces
- Long lasting warranties
- Individual units fully assembled, simply bolt to the next unit

Additional extras:

Rotisseries, covers, griddle grates, griddle plates, smoker box & ceramic briquettes

“
I've had this BBQ for a few years now, and it's still going strong. The size is ideal for our family, and it's been very reliable. Highly recommend it
”



Mix and match a variety of units to suit your desired layout!

Offering endless combinations and a plethora of storage space, choose from a wide range of different units to build your very own bespoke stainless steel kitchen, with your home and outdoor space in mind.

The Centrepiece: The Cirencester 4 or 6 BBQ

These premium BBQs can stand alone as a striking feature in your garden or be seamlessly integrated into the Cirencester Modular Kitchen, offering both functionality and elegance, allowing you to create the ultimate outdoor culinary space.

Key features:

- High grade, weather resistant stainless steel (430)
- Pre-assembled design for quick and easy installation
- Long lasting warranties - 5-year warranty
- Battery operated ignition
- Suitable for a variety of outdoor spaces, from small patios to large outdoor spaces
- LPG
- Side shelves for extra cooking space



Width: 1919mm with side tables Depth: 634mm Height: 1194mm Cooking area: 659 x 429 N.Weight: 86.80KG

The Cirencester 4

The Cirencester 4 has a dazzling full 430 stainless steel construction, featuring 4 main burners, a side burner, a ceramic infrared back burner and generous side shelves to provide ample cooking preparation space, with a cupboard and two drawers for storage.



Width: 2219mm with side tables Depth: 634mm Height: 1194mm Cooking area: 957 x 429 N.Weight: 108.00KG

The Cirencester 6

This monster of a barbecue is the biggest within the Whistler range. This grill has everything you need to host the ultimate outdoor gathering, from its extremely versatile multi-grill interchangeable options, ability to cook different items at once, to its generous storage space below with 2 cupboards and 2 drawers.



1. Gas Bottle Cabinet

- Stores and hides a 13kg gas bottle, supporting slide out base within
- Solid stainless steel construction

2. Double Door Storage Cabinet

- Solid stainless steel construction
- Individual unit fully assembled, simple bolt to another unit

3. Triple Drawer Cabinet

- Solid stainless steel construction

4. Sink Unit

- Plenty of lockable storage space with bin inside
- Fully welded 304, 21.97 litre handmade sink
- Luxury tap

5. 45° & 90° Corner Cabinet

- Solid stainless steel construction
- Delivered 99% assembled

6. Double Door Fridge

- Compressor refrigerator, capacity 228 litres
- 304 stainless steel exterior finish
- Low noise operation
- Double glazed glass doors
- Internal LED lights

1 Height: 903mm Depth: 582mm
Width: 564mm N.Weight: 23.50KG

4 Height: 903mm Depth: 589mm
Width: 830mm N.Weight: 53.00KG



2 Height: 903mm Depth: 582mm
Width: 830mm N.Weight: 49.00KG

5 Height: 903mm Depth: 536mm / 632mm
Width: 527mm / 632mm N.Weight: 21 / 35KG



3 Height: 903mm Depth: 582mm
Width: 830mm N.Weight: 53.00KG

6 Height: 903mm Depth: 604mm
Width: 905mm N.Weight: 72.00KG



Or, pick one of our pre-designed Cirencester Kitchen layouts:

Choose from the range of pre-built kitchens we have designed. Please note, these kitchens come with the option of the Cirencester 4 or 6 BBQ as the centrepiece.

Experience luxury outdoor living at an affordable price!

“*The Cirencester 6 BBQ makes every cookout a success.*”



Blockley



Lechlade



Oaksey



Malmesbury



Stanton



Marlborough



Stroud



Burford Built-in Range

The built-in range features the beautiful Burford BBQ, perfectly complemented by a selection of matching drawers, doors, bin, and side burners.

The built-in range features the beautiful Burford BBQ, perfectly complemented by a selection of matching drawers, doors, bins, and side burners. Crafted from high-quality materials, Whistler ensures durability and long-lasting performance, making this range the ultimate choice for creating a bespoke outdoor kitchen. Designed with attention to detail, it combines elegance and functionality.

The Centrepiece: Burford BBQ

The Whistler Burford built-in BBQ is offered in two sizes to suit all outdoor spaces, forming the centrepiece of your outdoor kitchen for years to come

Key features:

- High grade, weather resistant stainless steel (304)
- Available in Stainless Steel or Black (black only available in Burford 5 size)
- Limited lifetime warranty
- Available in 2 sizes – 4 & 5 burner
- LED control panel and halogen cooking surface lights
- Rotisserie, and ceramic infrared back burner included

Additional extras:

Optional Side Burner, Ceramic Briquettes, Griddle Plate, Smoker Box* and Cover

*Included in the Burford 5

“
I've cooked for many friends on our Whistler and it's an absolute standout. Our new favourite is a roast on the rotisserie, perfect every time!
”



Width: 862.8mm Height: 629.6mm Depth: 708.6mm N.Weight: 66.20KG

The Burford 4



The Burford 5



Width: 1066mm Height: 629.6mm Depth: 689.7mm N.Weight: 83.00KG

Customise your outdoor kitchen

Complemented by a range of high quality drawers, doors, side burners and bin units to match, allowing you to design and create a kitchen bespoke to your outdoor space.

Choose from the variety of units, available in both silver and black.

Built-in Side Burner (SB4) and (SB5)

Enhance your grilling experience with our Burford side burners. These versatile units can be used for heating or searing. We recommend the SB4 for Burford 4 and the SB5 for Burford 5.

Key features:

- Burner BTU : 12000BTU/one
- Constructed with tough 304 grade stainless steel
- Blue LED lighting system



SB4 Height: 345mm Width: 340mm Depth: 655mm
SB5 Height: 345mm Width: 574mm Depth: 631mm



Burford Built-in Single Drawer



Height: 189mm Width: 362mm Depth: 567mm

Burford Built-in Single Drawer Large



Height: 244mm Width: 418mm Depth: 567mm

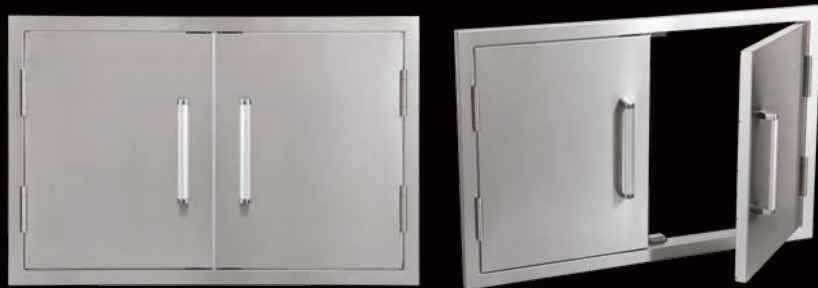
Burford Built-in Bin



Height: 546mm Width: 418mm Depth: 558mm



Burford Built-in Double Door



Height: 546mm Width: 834mm Depth: 87mm

Burford Built-in Double Drawer and Single Door



Height: 546mm Width: 834mm Depth: 557mm

Burford Built-in Single Vertical Door (two sizes available)



Height: 572mm Width: 419mm Depth: 82mm
Large Height: 666mm Width: 494mm Depth: 82mm

Burford Built-in Triple Drawer



Height: 546mm Width: 418mm Depth: 567mm

Burford Built-in Single Horizontal Door



Height: 419mm Width: 572mm Depth: 82mm

Burford Built-in Triple Drawer and Bin



Height: 546mm Width: 838mm Depth: 567mm





Freestanding BBQ's Range

Whistler Grills offers a diverse range of freestanding BBQs in various sizes, perfect for everything from a cosy dinner for two to a grand feast.

Crafted from high-quality materials, these BBQs are built to withstand the toughest UK weather, ensuring year-round grilling.

The Bibury Range

The Bibury range is Whistler's premier collection, offering unmatched sophistication and style for your outdoor space. With its sleek design and thoughtful features, it provides the ultimate outdoor cooking experience, allowing you to entertain year round with ease and elegance!

Key features:

- High grade, weather resistant stainless steel (304)
- Long lasting warranties
- Soft closing doors and drawers
- LED control panel and halogen cooking surface lights
- LPG
- Pre-assembled design for quick and easy installation
- Jetfire direct ignition to the main burners

“
Love the versatility of this grill and great value for the price!
 ”



The Bibury 4

Offering the perfect balance of space and versatility, ideal for medium gatherings, providing ample cooking area and powerful performance for a variety of outdoor meals.

Width: 1585.8mm with side tables Depth: 708.5mm Height: 1284.6mm Cooking area: 812.8 x 482.6mm N.Weight: 103.98KG



The Bibury 5

Perfect for larger events or cooking for a crowd, featuring additional burners for more versatile meals as well as cooking multiple dishes at once!

Free rotisserie, food grade 304 stainless steel cooking grate, smoker box included, quality cover, infra red side burner with lid included.

Width: 1789mm with side tables Depth: 689.7mm Height: 1284.6mm Cooking area: 1016 x 482.6mm N.Weight: 133.50KG

The Cirencester Range

The two impressive Cirencester grills can be bought as a stand-alone striking feature in your garden, or be seamlessly integrated into the Cirencester Modular Kitchen as the centre piece (see Cirencester Modular Range). These grills are made up of high-quality components offering functionality and elegance, yet sit within an affordable price bracket

Key features:

- Weather resistant stainless steel (430)
- Long lasting warranties
- Soft closing doors and drawers
- Side shelves for extra cooking space
- LPG
- Pre-assembled design for quick and easy installation
- Covered hob side burner
- Battery operation ignition

Additional extras:

Rotisserie, cover, cooking grates, griddle plates, smoker box & ceramic briquettes



Width: 1919mm with side tables Depth: 633.6mm Height: 1195.3mm Cooking area 659 x 429 N.Weight: 86.80 KG

The Cirencester 4

The Cirencester 4 has a dazzling full 430 stainless steel construction, featuring 4 main burners, a side burner, a ceramic infrared back burner and generous side shelves to provide ample cooking preparation space, with a cupboard and two drawers for storage.



Width: 2219mm with side tables Depth: 633.6mm Height: 1195.3mm Cooking area 957 x 429 N.Weight: 108.00 KG

The Cirencester 6

This monster of a barbecue is the biggest within the Whistler range. This grill has everything you need to host the ultimate outdoor gathering, from it's extremely versatile multi-grill interchangeable options, ability to cook different items at once, to its generous storage space below with 2 cupboards and 2 drawers.



WHISTLER GRILLS

freestanding



Accessories

We've got you covered

Whistler is committed to providing a range of useful, high-quality accessories to complement your outdoor kitchen and cooking experience. We offer the following products:



Covers

We offer premium heavy weight covers for all BBQ ranges, to provide protection from harsh weather as well as keeping them safe, clean and in pristine condition throughout the year.

Suitable for: All BBQ's, with the exception of modular kitchen units.



Ceramic Briquettes

Designed to offer you the benefits of both gas and charcoal cooking, ceramic briquettes distribute heat evenly throughout your grill and are great at retaining heat, reducing the amount of energy it takes to keep your BBQ hot. With many beneficial features such as being long lasting and self-cleaning, as well as a great food flavouring tool, ceramic briquettes are the very best solution to heat disbursement and retention.

Material: Stainless Steel 304
Per Tray: 16 briquettes

Suitable for: Whistler Bibury, Burford and Cirencester models.



Rotisseries

Rotisseries offer the advantages of direct roasting meat. It allows the excess fat and grease to drain off during the rotation process.

Suitable for: All BBQ models.



Whisky Smoking Chips

Complementing the Whistler Smoker Box, add our Whisky Chips to create an amazing whisky smoky flavour to your food! Made from authentic scotch whisky barrels. 400g.

Suitable for: Whistler Bibury, Burford and Cirencester models Smoker Box.



Smoker Box

The Whistler Grills Smoker Box allows you to add delicious smoky flavours to food, that you cannot get through any other means. The Smoker Box sits alongside the cooking grates and can be filled with flavoursome wood chips to bring you delightful aromas and tastes.

Suitable for: Whistler Bibury, Burford and Cirencester models.



Griddle Plates

Made from 304 stainless steel, these flat griddle plates replace the grates to create a versatile flat cooking surface.

Suitable for: Whistler Bibury, Burford and Cirencester models.

Cooking Grate

Made from 304 stainless steel, these cooking grates replace the complimentary griddle plate to create a full grate cooking surface.

Suitable for: Whistler Bibury, Burford and Cirencester models.

Heat Dividers

Designed to divide the heat chambers between burners. The divider maximises the heat from each individual burner, allowing you to cook effectively above each individual burner.

Suitable for: Whistler Bibury and Burford models. Already comes with Bibury and Burford 5

Whistler Grills Cleaning Products

The ultimate set of cleaning products to protect, shine and ensure durability for your BBQ.

Suitable for:
All Whistler products.



Stainless Steel 3in1

Has been specially developed to clean, shine and protect stainless steel surfaces in just one easy step, leaving a streak-free coated shine. This product effortlessly removes all dirt such as oil, grease, fingerprints etc, making the surface look like new again whilst adding a layer of protection. The 3in1 works in line with the power cleaner spray, acting as a conditioner.

Stainless Steel Power Cleaner

Safely dissolves fats, proteins and starches quickly and effectively. This product is also suitable for all other water-resistant surfaces such as enamelled surfaces, glass, ceramic, granite, marble and plastic.

Stainless Steel Polish

Removes surface corrosion and oxidation to restore brilliant high gloss, premium shine and lustre. A fast and easy to use cleaning step, whilst also being food-safe. The polish creates a layer of protection to your stainless steel product.

➤ As Seen In



email: customersupport@whistlergrills.com



Whistler Grills Warranty

Warranty registration needs to be completed within 30 days of purchase.

Visit: www.whistlergrills.com/warranty/register/



Whistler Grills Owners Club

Join our **Whistler Grills Owners Club UK** group on **Facebook** for exclusive offers, insider tips, and much more!

Product Care

Although Whistler products are designed to last, using some of the highest grades of stainless steel, they still have to be well looked after and protected. Similar to a car, if you keep them clean and well maintained they will be trouble free for many years, leave them exposed to harsh elements and unprotected, they will deteriorate.

Covers

With this in mind, we have developed premium covers for every grill we produce, as well as having launched a range of superb cleaning products to help provide your Whistler product with the protection it deserves! These can be found within the Whistler Accessory Range.

Cleaning products

Whistler Grills Stainless Steel 3in1

Whistler Grills Stainless Steel BBQ Polish

Whistler Grills Power Cleaner

- The ultimate set of cleaning products to enhance shine and ensure durability
- Cleans, shines and protects your Whistler products
- Easy to apply
- Food safe cleaning (NSF certified)
- Streak-free formula
- Powerfully removes oil & grease

Aftercare Service

Service Engineers

Whistler Grills have a dedicated engineer covering the whole of Mainland UK. Our engineer can carry out services or repair/replace damaged products/parts that are covered by warranty.

Customer Support

Whistler Grills have a very proactive customer support team who work in conjunction with retailers, to ensure we continue to offer the best customer service within the industry. Any queries regarding your Whistler product should be discussed with your retailer in the first instance, who will then liaise with Whistler's customer support team if required.

If you wish to find out more please head to our website www.whistlergrills.com

Whistler Retailers

If you wish to find your nearest Whistler stockist, please visit our retailer locator map on our website at www.whistlergrills.com where you'll find Whistler retailers by region.

Trade queries

Should you be interested in opening a trade account with us, please fill out the application form on our website.

www.whistlergrills.com/become-a-retailer/

Warehouse address:

Whistler Grills Limited, The Old Brickyard, Ashton Keynes SN6 6QR. By appointment only.



WHISTLERGRILLS

www.whistlergrills.com email: customersupport@whistlergrills.com



Whistler Grills Limited



Whistlergrillsltd_